

Key Benefits

- Federate resources and control computations
- Accelerate computations and improve productivity
- Save on IT and administration costs

Key Features

- Build workflows to ease parallelization and maintenance
- Workflow templates catalog
- Dataspace to ease data sharing in every situation
- Resource aggregation with clusters, desktops, VMs and clouds
- Monitoring from infrastructure resources to real applications metrics
- Fault tolerance with failure detection and automatic recovery
- Web interfaces to ease deployment
- Powerful Java SDK and REST API for integration

Key Differentiators

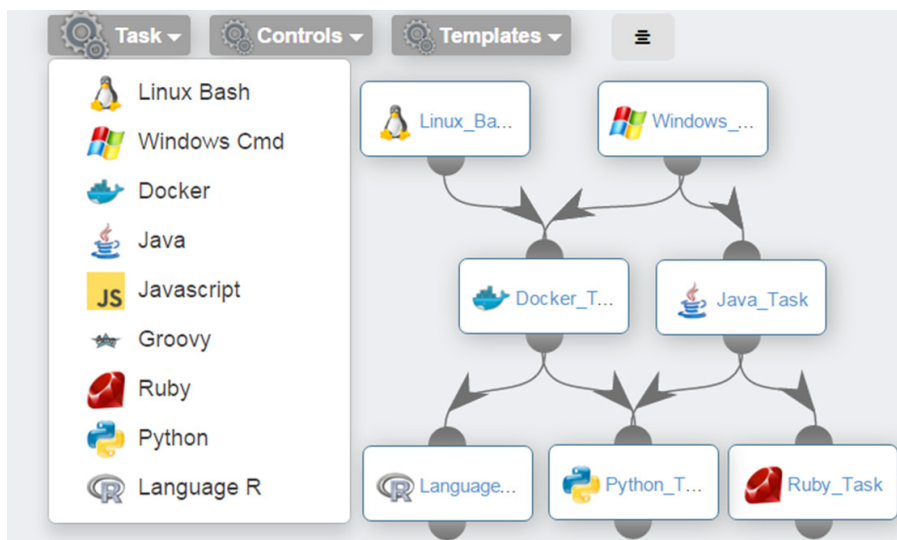
- Multi-platform: Linux, Windows, MacOS, IBM iSeries/AS400, Amazon Web Services, Google Cloud, VMware, Hyper-V, Microsoft Azure, AWS, OpenStack, CloudStack
- Interface with native schedulers: Slurm, SGE, PBS
- An Open Source solution

Overview

ProActive Workflows & Scheduling allows you to **easily execute all your company jobs** and business applications, monitor activity and quickly access job results. Allowing your IT to **scale up and down according to your actual workload**, it will ensure the optimal match between disponibility and cost. It ensures more work done with fewer resources, managing heterogeneous platforms and multiple sites with advanced usage policies. Thanks to its flexibility, ProActive Workflows & Scheduling will help you for any expansion, federation and integration project.

Unified platform for all your users and all your apps

Aggregate and manage resources from different infrastructures including desktop machines, clusters, native batch-schedulers and clouds. **Control the resources acquisition** according to various policies such as load or time based. Share all your resources to all your users with **enterprise-class user management** functionalities like directory service integration, usage restrictions and accounting.



Flexibility is your key to increase productivity

ProActive Workflows & Scheduling handles all kind of workflows from scientific simulations to IT processes and data mining, with solutions for many different use cases. Failures and outage are phenomenons that every system administrator is aware of. ProActive Workflows & Scheduling handles these scenarios and makes a **fault tolerance to get things done** with external resource aquisition, automatic job state recovering and re-scheduling policies. Also, we know that data integration is a key point for every business. Our solution brings you with ease the perfect architecture to **integrate your data** with efficiency and logic.



Reduce Costs

ProActive Workflows & Scheduling allows you to federate your existing resources (clusters, native batch-schedulers, desktop machines and virtualized infrastructures) and add on-demand extra resources from external environments such as clouds.

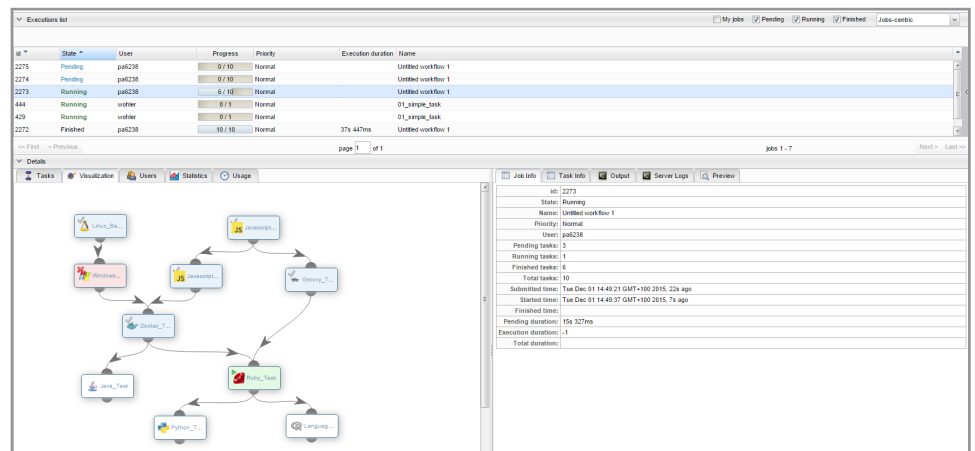
With smart policy-driven decisions, control task placement, workload capacity (planning and elasticity) and energy saving strategies.

Build workflows to accelerate jobs and ease maintenance

Workflows are representation of your distributed computations. Consisting on the definition of one or more tasks (native executables, scripts, Java) and their dependencies, you can set advanced flow controls such as replication, conditional branching and loops. Workflows allow easy task parallelization to accelerate jobs and reduce costs.

Web portals : Everything from your web browser

Studio and Scheduler interfaces are dedicated to users for running job workflows. You can build and submit jobs, monitor their execution and retrieve results. Remote visualization allows connection to your interactive tasks with graphical interfaces. Progress of workflows execution is visible from the portal. Resource Manager interface allows administrators to operate the platform and users to monitor their resources. Also, every operation is doable from REST API.



Web interface for job submission, execution control, management and retrieve results

Learn More



Download



Try Online



Get Demo

Register and get free support during a 10 days period

activeeon.com/workflows-scheduling

Monitoring : all insights to make the right decision

ProActive Workflows & Scheduling offers monitoring capabilities for your resources and your applications to collect and track the metrics on which you base your triggers. Monitor the status of all your resources: VMWare ESXi, vSphere, vCloud, OpenStack, CloudStack, physical and virtual machines, storage, network and applications. Easily expose your own metrics with simple south APIs: JMX, REST and plain text file. Set alarms to help you troubleshoot or trigger automatic actions such as elasticity or disaster recovery plan.

Contacts

ActiveEon

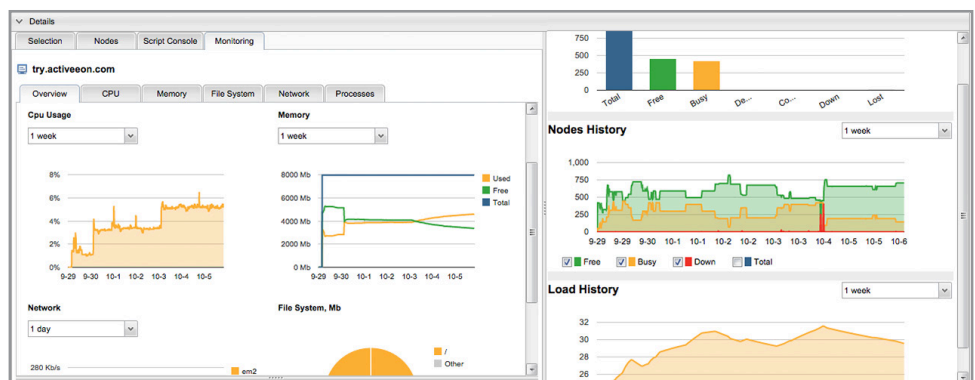
2000 route des Lucioles
 Les Algorithmes - Pythagore B
 06560 Sophia Antipolis - FRANCE

Tel. +33 (0) 9 88 77 76 60

Fax +33 (0) 9 88 77 76 61

contact@activeeon.com

www.activeeon.com



Monitoring of physical and virtual machines, storage, network and applications